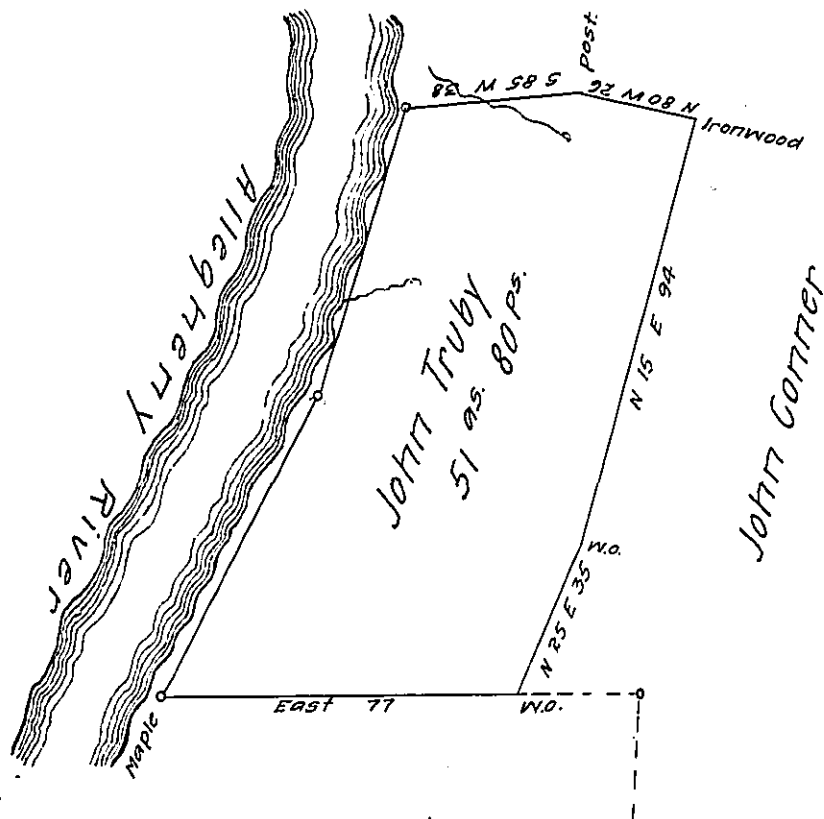


John Corner



Peter Beninger
ROW
James Beninger

Courses down the river
S 17 1/2° W 64
S 27 1/2° W 73

In pursuance of a warrant dated the 22nd day of July 1836
Granted to John Truby

Surveyed on the 14th day of September 1836 the above
described tract of land containing fifty one acres and eighty
perches with the allowance of six pr. Ct. Situate in Toby Town-
ship Armstrong county state of Pennsylvania east of the
Allegheny river

Jonathan E Meredith D.S.

To John Taylor Esqr.
Surveyor General.

IN TESTIMONY that the above is a copy of the original remaining on file in
the Department of Internal Affairs of Pennsylvania, made
conformably to an Act of Assembly approved the 16th day of
February 1833, I have hereunto set my hand and caused
the Seal of said Department to be affixed at Harrisburg,
this sixteenth day of April 1908.

Henry Horne
Secretary of Internal Affairs.